

LOVED IN
100
COUNTRIES

BAJAJ

THE WORLD'S
FAVOURITE
INDIAN

DOMINAR 400 | **DOMINAR 250**

***NOW FACTORY-FITTED
FOR LIMITLESS TOURING***



DOMINAR
DON'T HOLD BACK

LOADED WITH FEATURES



BUILT TO GO THE DISTANCE

THE ALL-NEW DOMINAR 400 & 250 WITH THE  TOUR KIT

- BONDED SPEEDO • ERGONOMIC HANDLEBAR
- CARRIER GPS MOUNT • RIDE MODES
- ADVANCED SWITCHGEAR • ELECTRONIC THROTTLE BODY*

- TALL VISOR
- BACK STOPPER
- SADDLE STAY
- HANDGUARDS
- BELLY PANER
- NAVIGATION STAY
- CARRIER
- LEG GUARDS
- USB CHARGING PORT

IT'S TOURING READY JUST LIKE YOU. THOUGHTFULLY DESIGNED AND SMARTLY HANDPICKED, THE FACTORY FITTED ACCESSORIES DON'T JUST ACCENTUATE THE STYLE AND TOUR-WORTHINESS OF THE MOTORCYCLE BUT ALSO AMP-UP THE RIDER'S SAFETY.

SO, WHY HOLD BACK YOUR PLANS WHEN YOU CAN GO TOURING RIGHT FROM THE SHOWROOM.



BONDED SPEEDO



CLEAR. TOUGH. ALWAYS ON.

A bonded speedometer with an integrated flap ensures high visibility and lasting durability, ready to handle rain, dust, and long-distance wear, wherever you go.



ERGONOMIC HANDLEBAR

RIDE FAR. RIDE EASY.

Redesigned for long-haul comfort and better posture, it's engineered to reduce fatigue on extended rides.



RIDE MODES



CONQUER EVERY TERRAIN.

Selectable ride modes let you adjust performance to match all kinds of terrain and conditions, whether it's smooth tarmac or a rugged trail.

 Road |  Rain |  Sport |  Off-Road



ELECTRONIC THROTTLE BODY*

POWER THAT FOLLOWS YOUR LEAD.

With ride-by-wire tech and dynamic performance control, Dominar delivers smooth, instant throttle response across all four selectable modes: Rain, Road, Sport, Off-road.

*Only on Dominar 400

ADVANCED SWITCHGEAR



COMMANDS AT YOUR FINGERTIPS.

Refined switchgear designed for quick access, even with gloves on. The premium switch controls are engineered for touring conditions, with tactile feedback and a built-in USB charger to power devices on the go.



CARRIER GPS MOUNT

NAVIGATION, LOCKED IN.

A carrier GPS mount keeps your route secure and in view, making for a seamless navigation experience.

TALL VISOR



FOR THE RACE AGAINST THE WIND

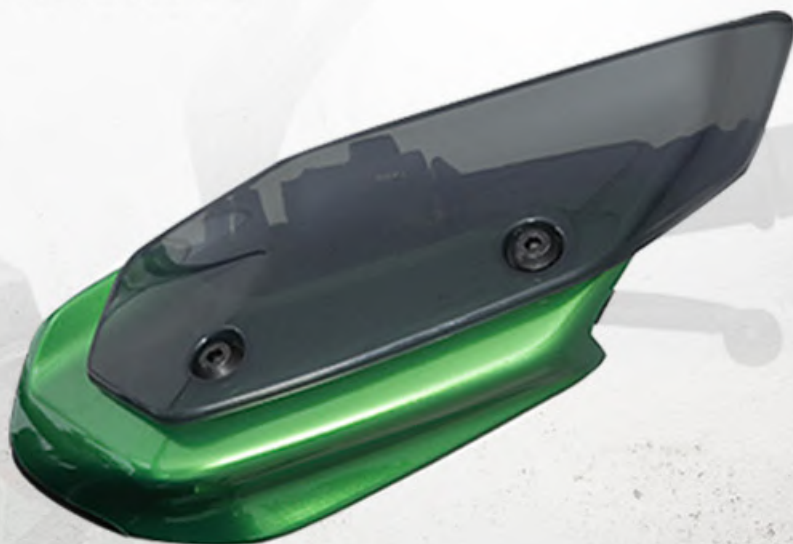
Developed with cutting edge CFD tech, the tall visor gives a meaner face to this beast. It's designed to offer good wind-blast protection thus improving rider comfort.



HANDGUARDS

FOR HANDLING UNWANTED SURPRISES

Inspired from fighter jets, these aerodynamically sculpted handguards with flexi-winglets ensure maximum wind protection.



CARRIER



FOR A BAG FULL OF MEMORIES

The stylish and functional carrier, designed to offer adequate luggage carrying capability, enhances the touring friendly nature of the Dominar.



BACK STOPPER

FOR PARTNERS IN THRILL

The Dual-Finish Black Back Stopper is designed to give a hi-tech look to the Dominar and ensure maximum pillion comfort. After all, the road isn't long when you have the right company.



BELLY PAN



APPETITE FOR BIG ADVENTURES

Designed with an integrated metal skid plate, the purposeful and stylish belly pan offers good impact protection and gives you the confidence to tread the path less taken.



LEG GUARDS

PUT YOUR BEST FOOT FORWARD

The rugged and discreet leg guards offer superior crash protection. Go ahead, get a leg up on your rides.



SADDLE STAY



FOR A THOROUGH-BRED TOURER

The stylish saddle stay doesn't just keep your bags safe and secure, but also amps up your style quotient and turns heads wherever you go. *Paid Accessory



NAVIGATION STAY

GO WHERE THE ROADS TAKE YOU

Designed to explore with confidence, the sturdy cast aluminium stay is made to fit any navigation device. Positioned ergonomically, it is neatly integrated so that it doesn't block the road view.





USB CHARGING PORT

STAY CONNECTED EVEN WHEN YOU GET LOST.

A USB charging port on the navigation stay offers charging on the go. So that you stay in charge, no matter what.



FORM AND STYLE

DESIGNED TO DOMINATE WHEREVER YOU GO.

Inspired by the Leo stance, it is designed to dominate. A low-slung saddle, a large, contoured tank and formidable rear infinity lights build its massive presence. Premium body colours, redesigned mirrors and new tail lamp internals enhance its signature identity while the twin barrel exhaust imparts an imposing sports-tourer feel.



TECHNOLOGY



ENGINEERED TO CONQUER.

The bonded speedo offers clear, all-weather visibility, while the ride-by-wire ETB with four ride modes, adapts power delivery to suit every terrain. Up front, an advanced mosaic-shaped full LED headlamp ensures you're seen from up to 1.5 km away.



AGILITY

TO STAY AHEAD OF THE GAME.

Its massive perimeter frame coupled with a stamped metal swingarm ensures torsional rigidity and lateral strength. The resulting low centre of gravity offers superior control. A slipper clutch enables precise gear shifts at any RPM, and the low-profile radial tyres impart better stability while cornering.

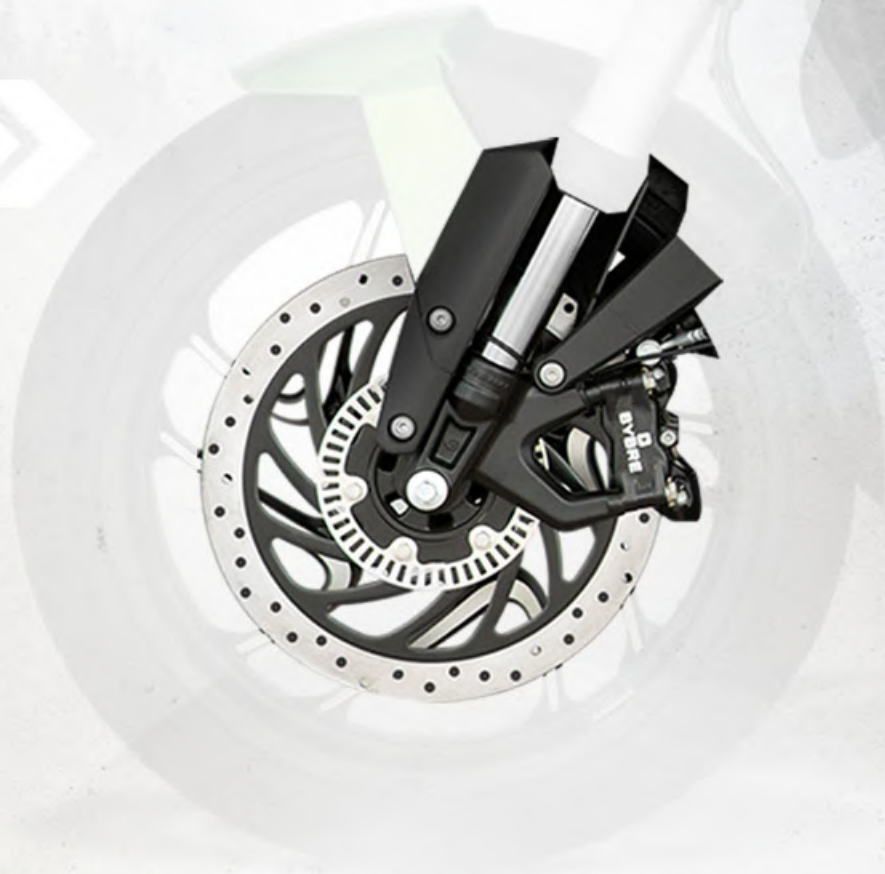
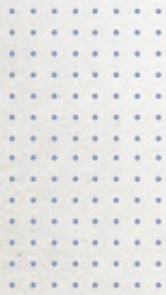


CONTROL



TO RIDE FEARLESS.

With 320mm front and twin-channel ABS, it goes from 100 to 0 km/h faster and safer. Its upside down (USD) front forks inspire superior handling and confidence when it comes to attacking corners-in all riding conditions.



PERFORMANCE

TAME IT ALL.

With 29.8kW(40.6 PS) @ 9000 rpm of power and 33.2 Nm of @ 7500 rpm torque. The roaring 349.13cc fuel injected, triple-spark 4-valve, DOHC engine has been refined further for unmatched performance. A lightweight forged crankshaft, and a high-speed gear train add more power with every twist of the throttle.



TECHINGAL SPECS



D400

D250

ENGINE

Type	4 stroke, Liquid cooled, Single Cylinder, DOHC, Naturally aspirated	4 stroke, Liquid cooled, Single Cylinder, DOHC, Naturally aspirated
Displacement (cc)	349.13	248.77
Max. Power (Ps @ RPM)	40.6 Ps @ 9000 rpm	27 PS @8500 rpm
Max. Torque (Nm @ RPM)	33.2 Nm @ 7500 rpm	23.5 Nm @ 6,500
No. of gears	6 gears	6 gears
Ride modes	4 ride modes- Road, Off-Road, Sports and rain with Electronic throttle body	4 ride modes- Road, Off-Road, Sports and rain with Mechanical throttle body

FRAME

Frame type	Beam type perimeter frame	Beam type perimeter frame
------------	---------------------------	---------------------------

SUSPENSION

Front (Type / stroke travel in mm)	Telescopic, 43mm USD Fork 135mm travel	Telescopic, 37mm USD Fork 135mm travel
Rear (Type)	Multi-step adjustable Mono shox with Nitrox, Wheel stroke of 110mm	Multi-step adjustable Mono shox with Nitrox, Wheel stroke of 110mm

BRAKES

Front Brakes (type & size)	ABS, 320 dia disc	ABS, 300 dia disc
Rear Brakes (type & size)	ABS, 230 dia disc	ABS, 230 dia disc

TYRES

Front (type & size)	110/70-R17" Tubeless	100/80-R17" Tubeless
Tyres Rear (type & size)	150/60-R17" Tubeless	130/70-R17" Tubeless

DIMESNIONS

Overall Length (mm)	2151	2151
Wheelbase (mm)	1452	1452
Ground clearance (mm)	157	157
Saddle height (mm)	800	800
Kerb weight (kg)	190	180

ELECTRICAL

System	DC	DC
Battery (Voltage / Current)	12V, 8Ah VRLA	12V, 8Ah VRLA
Head lamp wattage	LED with AHO, 10 units	LED with AHO, 10 units
Turn signal indicator	LED	LED
Horn (wattage & no.)	12 V DC	12 V DC
Console	Digital	Digital
Gear indicator	Yes	Yes
Trip details (time, Avg speed, fuel consumption)	Yes	Yes
USB charging port	Present	Present

COLOURS



DOMINAR 400



Aurora Green

Charcoal Black



DOMINAR 250

Canyon Red



Sparkling Black



Citrus Rush



LOVED IN
100
COUNTRIES



THE WORLD'S
FAVOURITE
INDIAN

DOMINAR
400
DON'T HOLD BACK



FOLLOW

BAJAJ DOMINAR ON

