



New

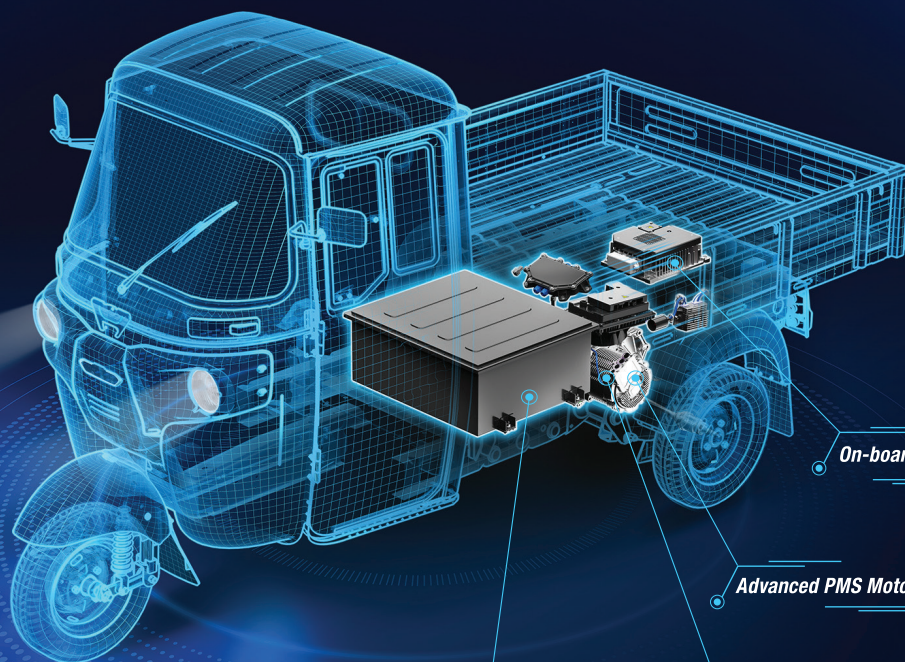


Cargo e-TEC 9.0



THE WORLD'S  
FAVOURITE  
INDIAN

# TECHNOLOGY NAYI BHAROSA WAHI



On-board Charger

Advanced PMS Motor

2 Speed Automatic Transmission

Big Battery – 8.9 kWh\*



 149 km\* range on single charge

 Better 29% Gradeability

 Strong Chassis

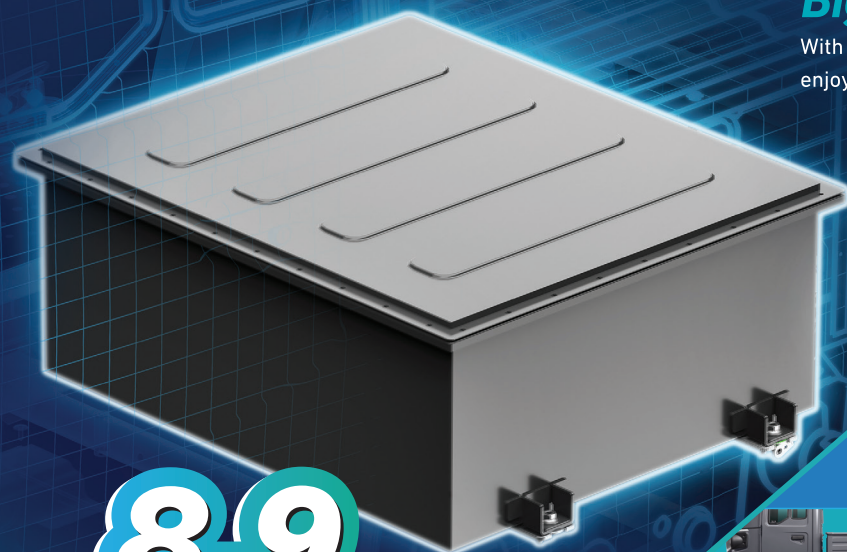
 75 Lakh# satisfied customers

 24/7 Roadside Assistance 1800-210-0981

\*As per ARAI certificate.

#75 lakh represent the total number of BAJAJ three-wheeler customers.





**8.9**  
kWh

## Big Battery

With a big battery of 8.9 kWh, enjoy a long range of 149\* km.



## On-board Charger

Now charge anytime, anywhere, without the inconvenience of carrying a heavy charger.



## 2 Speed Automatic Transmission

Enjoy extra miles, extra earnings, and better gradeability on every road.



## Advanced PMS Motor

Experience a highly efficient motor that minimises energy loss and maximises the overall range and gradeability.



## Big Tubeless Radial Tyre

Experience a more comfortable driving experience and hassle-free repair.



## Longest Wheelbase

Get better stability with a higher volume and multiple applications.



## Drive Shaft

CV shaft which reduces maintenance and enhance durability

## Specifications

### Performance

Top Speed	40 km/h - (Eco 30 km/h, Power - 40 km/h)
-----------	--

### Battery

Type	Li-ion - LFP
Battery Capacity (kWh)	8.9 kWh
IP67 Packaging	Yes

### Charger

Charging socket grid side	3 Pin 16 Amp
Charging time (Hrs.)	4 hrs 30 minutes <3 Hrs- 80%
Cable	RCD cable protects from voltage fluctuation

### Dimension

Wheelbase (mm)	2274
Ground Clearance (mm)	180
Tray size (mm)	1650 X 1425 X 275

### Drivetrain - Electric Motor & Transmission

Power (kW)	4.5 kW (Continuous)
Torque (Nm)	36 Nm
Gradeability	29% Max, 20% Continuous
Automatic 2 Speed Transmission	2 Speed AMT
IP67 Packaging	Yes

### Suspension

Front	Twin shock absorber with spring
Rear	Independent trailing arm with Helical spring

### Tyre

Type & size	Radial tubeless - 130/80 R12
-------------	------------------------------

### Braking system

Regenerative braking system with sensing mechanism	Yes
--	-----

### Hill Hold Assist

Avoid roll back on slopes	Yes
---------------------------	-----

### Warranty

36 Months / 80 000 km
-----------------------

## Charging Network

With Mera BAJAJ App, access a widespread charging network at your fingertips.



\*As per ARAI certificate.

## 24/7 Roadside Assistance

Call 1800-210-0981  
for roadside assistance  
anytime, anywhere

Dealership Stamp