

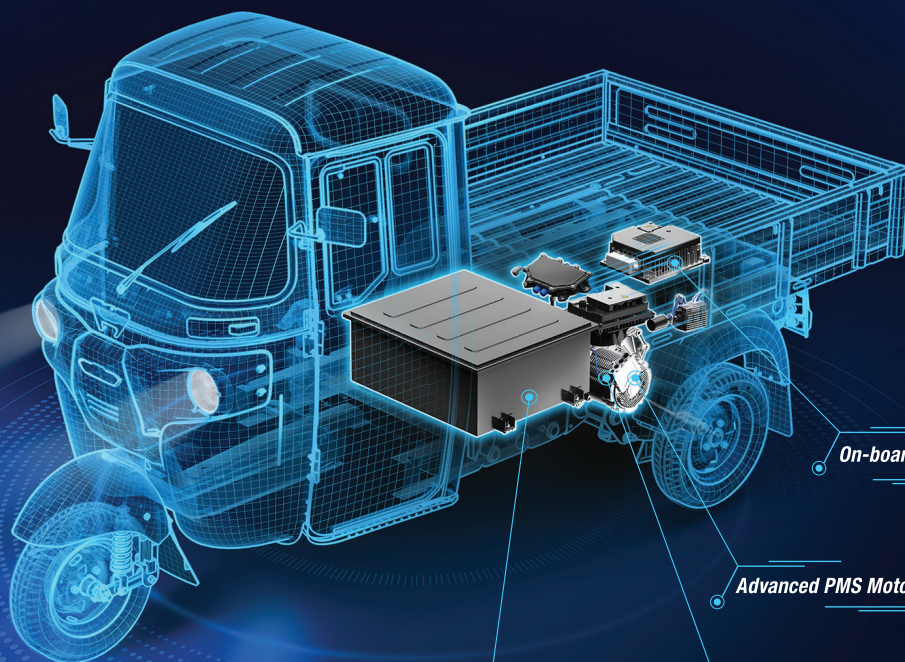


New

BAJAJ *Maxima* XL Cargo E-TEC 12.0



TECHNOLOGY NAYI BHAROSA WAHI



On-board Charger

Advanced PMS Motor

2 Speed Automatic Transmission

Big Battery – 11.8 kWh*



 **183 km*** range on single charge

 **Better 29%** Gradeability

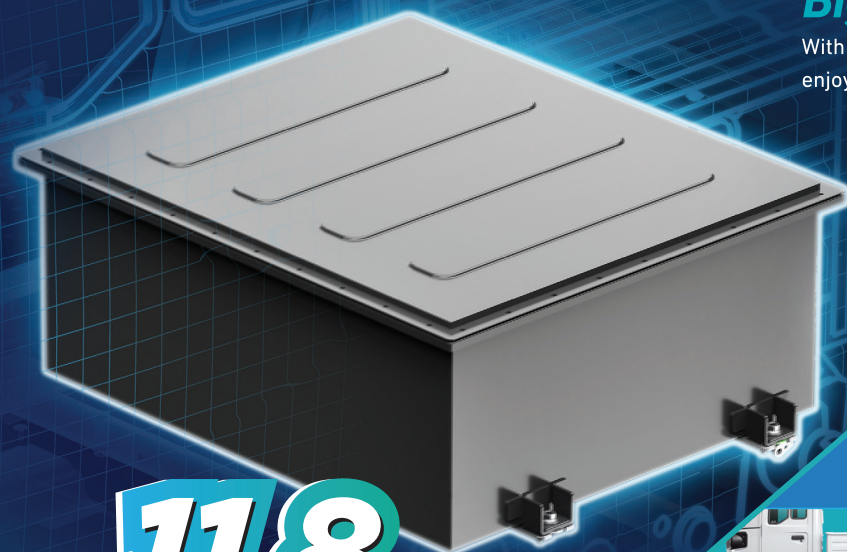
 **Strong Chassis**

 **75 Lakh#** satisfied customers

 **24/7** Roadside Assistance **1800-210-0981**

*As per ARAI certificate.

#75 lakh represent the total number of BAJAJ three-wheeler customers.



11.8
kWh

Big Battery

With a big battery of 11.8 kWh, enjoy a long range of 183* km.



On-board Charger

Now charge anytime, anywhere, without the inconvenience of carrying a heavy charger.



2 Speed Automatic Transmission

Enjoy extra miles, extra earnings, and better gradeability on every road.



Advanced PMS Motor

Experience a highly efficient motor that minimises energy loss and maximises the overall range and gradeability.



Big Tubeless Radial Tyre

Experience a more comfortable driving experience and hassle-free repair.



Longest Wheelbase

Get better stability with a higher volume and multiple applications.



Drive Shaft

CV shaft which reduces maintenance and enhance durability

Specifications

Performance

Top Speed	40 km/h - (Eco 30 km/h, Power - 40 km/h)
-----------	--

Battery

Type	Li-ion - LFP
Battery Capacity (kWh)	11.8 kWh
IP67 Packaging	Yes

Charger

Charging socket grid side	3 Pin 16 Amp
Charging time (Hrs.)	5 hrs 50 minutes <4 Hrs- 80%
Cable	RCD cable protects from voltage fluctuation

Dimension

Wheelbase (mm)	2274
Ground Clearance (mm)	180
Tray size (mm)	1840 X 1425 X 275

Drivetrain - Electric Motor & Transmission

Power (kW)	5.5 kW (Continuous)
Torque (Nm)	36 Nm
Gradeability	29% Max, 20% Continuous
Automatic 2 Speed Transmission	2 Speed AMT
IP67 Packaging	Yes

Suspension

Front	Twin shock absorber with spring
Rear	Independent trailing arm with Helical spring

Tyre

Type & size	Radial tubeless - 130/80 R12
-------------	------------------------------

Braking system

Regenerative braking system with sensing mechanism	Yes
--	-----

Hill Hold Assist

Avoid roll back on slopes	Yes
---------------------------	-----

Warranty

36 Months / 80 000 km

Charging Network

With Mera BAJAJ App, access a widespread charging network at your fingertips.



*As per ARAI certificate.

24/7 Roadside Assistance

Call 1800-210-0981
for roadside assistance
anytime, anywhere

Dealership Stamp