



New

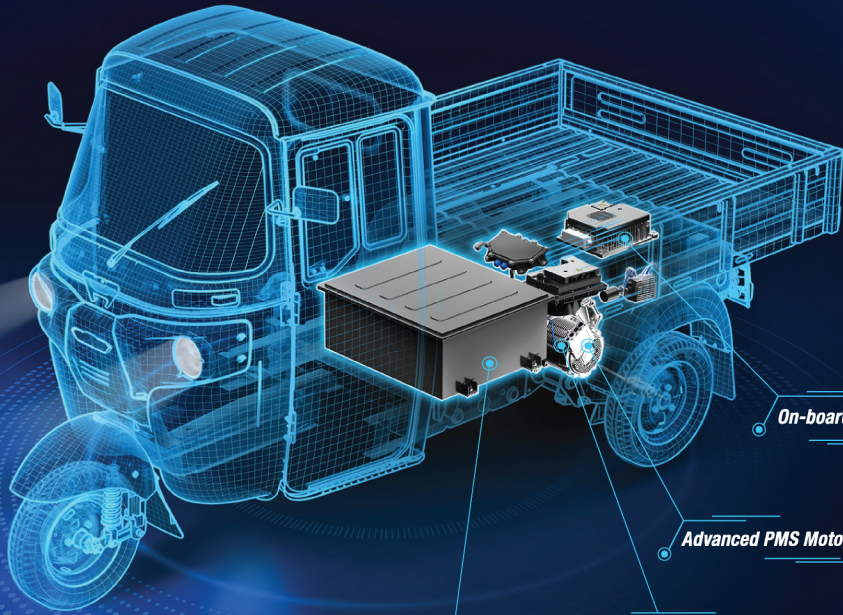
BAJAJ Maxima XL Cargo E-TEC 9.0



THE WORLD'S FAVOURITE INDIAN

TECHNOLOGY NAYI BHAROSA WAHI

**BEST IN CLASS
5 YEARS
OR
1.2L km
STANDARD
WARRANTY***



On-board Charger

Advanced PMS Motor

2 Speed Automatic Transmission

Big Battery – 8.9 kWh*



 149 km[#] range on single charge

 Better 29% Gradeability

 Strong Chassis

 75 Lakh^{##} satisfied customers

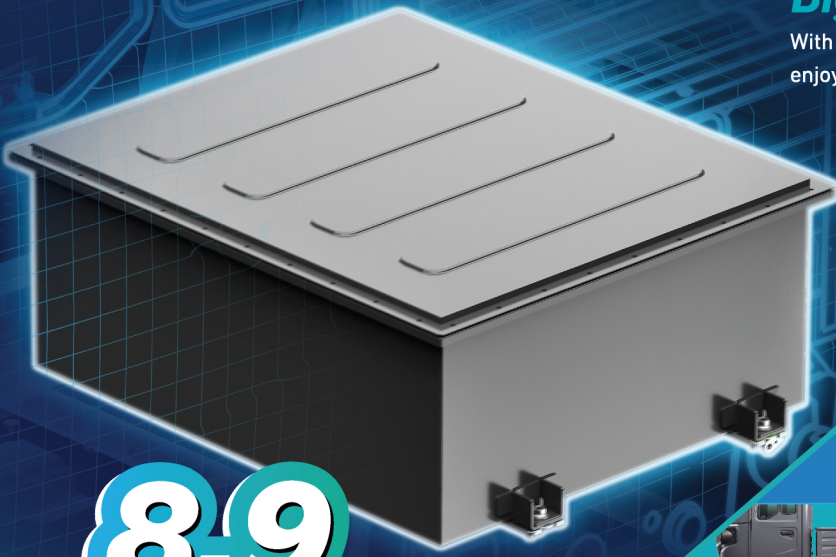
 Roadside Assistance 24/7 1800-210-0981

*Terms & conditions apply. *As per ARAI certificate. ##75 lakh represent the total number of BAJAJ three-wheeler customers.

Big Battery

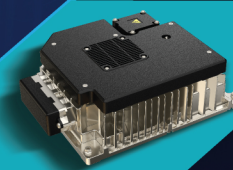
With a big battery of 8.9 kWh, enjoy a long range of 149^{mi} km.

8.9 kWh



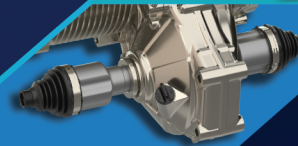
On-board Charger

Now charge anytime, anywhere, without the inconvenience of carrying a heavy charger.



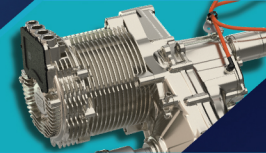
2 Speed Automatic Transmission

Enjoy extra miles, extra earnings, and better gradeability on every road.



Advanced PMS Motor

Experience a highly efficient motor that minimises energy loss and maximises the overall range and gradeability.



Big Tubeless Radial Tyre

Experience a more comfortable driving experience and hassle-free repair.



Longest Wheelbase

Get better stability with a higher volume and multiple applications.



Drive Shaft

CV shaft which reduces maintenance and enhance durability



Specifications

Performance

| | |
|-----------|--|
| Top Speed | 40 km/h - (Eco 30 km/h, Power - 40 km/h) |
|-----------|--|

Battery

| | |
|------------------------|--------------|
| Type | Li-ion - LFP |
| Battery Capacity (kWh) | 8.9 kWh |
| IP67 Packaging | Yes |

Charger

| | |
|---------------------------|---|
| Charging socket grid side | 3 Pin 16 Amp |
| Charging time (Hrs.) | 4 hrs 30 minutes <3 Hrs- 80% |
| Cable | RCD cable protects from voltage fluctuation |

Dimension

| | |
|-----------------------|-------------------|
| Wheelbase (mm) | 2274 |
| Ground Clearance (mm) | 180 |
| Tray size (mm) | 1840 X 1425 X 275 |

Drivetrain - Electric Motor & Transmission

| | |
|--------------------------------|-------------------------|
| Power (kW) | 4.5 kW (Continuous) |
| Torque (Nm) | 36 Nm |
| Gradeability | 29% Max, 20% Continuous |
| Automatic 2 Speed Transmission | 2 Speed AMT |
| IP67 Packaging | Yes |

Suspension

| | |
|-------|--|
| Front | Twin shock absorber with spring |
| Rear | Independent trailing arm with Helical spring |

Tyre

| | |
|-------------|------------------------------|
| Type & size | Radial tubeless - 130/80 R12 |
|-------------|------------------------------|

Braking system

| | |
|--|-----|
| Regenerative braking system with sensing mechanism | Yes |
|--|-----|

Hill Hold Assist

| | |
|---------------------------|-----|
| Avoid roll back on slopes | Yes |
|---------------------------|-----|

Best in Class Warranty

5 years / 120 000 km

Charging Network

With Mera BAJAJ App, access a widespread charging network at your fingertips.



*As per ARAI certificate.

24/7 Roadside Assistance

Call 1800-210-0981 for roadside assistance anytime, anywhere

Dealership Stamp